

A national forum for 'lifelines' infrastructure owners and stakeholders focused on strengthening our resilience to all hazards and threats. This year's theme is:

Connected Systems, Shared Resilience

Tuesday 10th November and Wednesday 11th November, Claudelands Event Centre, Hamilton

Register at the following link, [National Lifeline Utilities Forum 2026](#)

Invitees

We welcome attendees from critical infrastructure organisations, regional lifelines groups, emergency management, research agencies and other organisations working to improve New Zealand's infrastructure resilience and the wellbeing of our communities.

Feature Sessions:

Connecting with our Customers: Challenges in providing resilient services to critical customers and best practices in community engagement.

Connecting with our Government: Robust infrastructure supports a resilient economy. How is government directing and regulating resilience?

Connecting across our Infrastructure Systems: Managing interdependencies between infrastructure sectors across planning, response and recovery – what does good look like?

Connecting with Science: The latest science and research informing infrastructure risks and vulnerabilities.

Connecting Internal Systems: Case studies demonstrating best practices in technical aspects of building resilience.

Connecting with our Climate: With El Niño looming, this session focuses on good practice in climate risk planning and adaptation.

Connecting it all together – From Strategy to Action: Initiatives at the frontline to strengthen the resilience of infrastructure and backup services.

Keynotes

As always, our session keynotes are a mix of political, government and infrastructure leaders.

A full programme will be circulated in July.

Programme Timings

Tuesday 10 November: 9.00 am – 5.30 pm

Wednesday 11 November: 8.30 am – 3.30pm

Associated Forum Events

Monday 9 November 2026, 8.30 am - 12.00 pm
Lifeline Utility Coordinator Forum (invite only).

Tuesday 10 November 2026, 5.30 pm – 7.00 pm
Social Event tbc. All attendees invited.

Wednesday 11 November 2026, 7.00 am – 8.30 am:
Breakfast meeting for Programme Managers and Chairs of regional Lifelines Groups (invite only).

Costs

Costs include:

- GST and ticket fees
- Full entry for the 2-day event

Full entry: \$400.00 Early Bird (pay by 31st July), \$460.00 from 1st August.

Students: \$200.00 Early Bird (pay by 31st July), \$230.00 from 1st August.

Note: Participants are to arrange and pay for their own accommodation and travel.

New Zealand Lifelines Council Members



PRE-FORUM TOURS

9th November 2026. 12.30pm – 5.30pm
 Arrive and Depart FMG Stadium, Hamilton

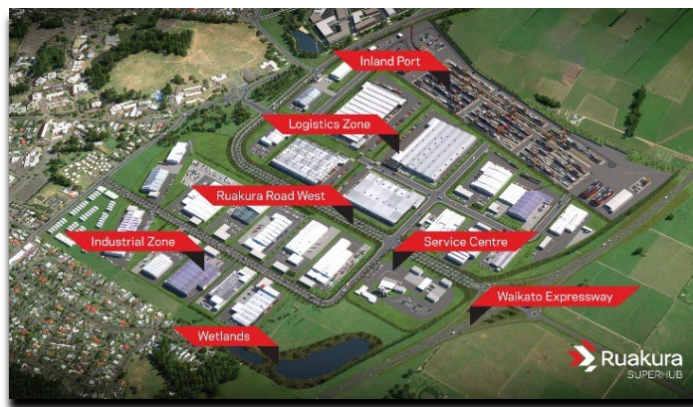
Option 1: Genesis Huntly Power Station and Ruakura Superhub

Travel by coach to Genesis Energy’s Huntly Power Station. The visit will begin with a welcome and short presentation followed by a guided site tour. During the visit, you’ll see key parts of the facility and learn about how it operates, as well as the station’s role in New Zealand’s energy system.



For those interested in pop culture, the station may look familiar — it was digitally transformed into the fictional “Chuglass Potato Chips” factory in The Minecraft Movie.

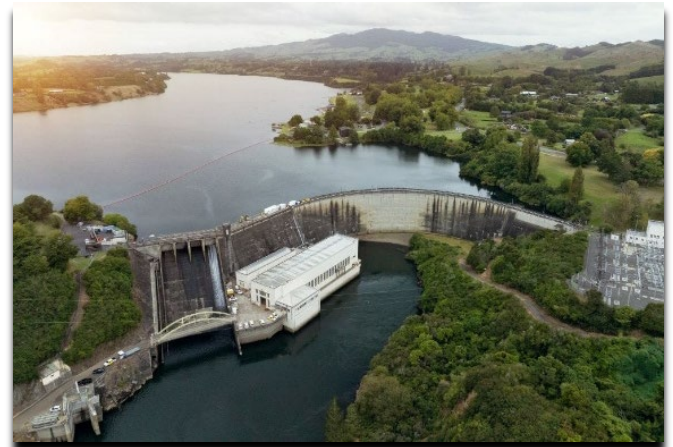
The group will return south with a guided coach tour through the Ruakura Superhub. This will provide insight into the development’s history, its current operations, and its future significance as a nationally important logistics and freight hub. Highlights include the Inland Port, Maersk’s integrated cold-chain logistics facility, and Kmart’s national distribution centre. The tour will also cover the site’s sustainably engineered wetlands.



Option 2: Mercury Karapiro Dam and Transpower Control Centre

Depart Hamilton, with the group splitting into smaller cohorts to concurrently visit two critical components of New Zealand’s electricity system.

At Mercury’s Karapiro Dam, the visit will begin with a presentation followed by a guided site tour. Participants will gain a high-level understanding of the operation of the hydroelectric generation facility and the management of water flows through the Waikato River system.



At the Transpower Control Centre, you will observe operators balancing New Zealand’s electricity supply and demand in real time. Acting as the grid’s “just-in-time” traffic controllers, they continuously monitor system stability, direct power stations on generation

levels, and manage the high-voltage transmission network.

New Zealand Lifelines Council Members

New Zealand Lifelines Council Members



National Emergency Management Agency
Te Rākau Whakamarumaru



NZ TRANSPORT AGENCY
WAKA KŌTAHI



MINISTRY OF BUSINESS, INNOVATION & EMPLOYMENT
HIKINA WHAKATUTUKI



TRANSPower



Earth Sciences New Zealand



CHORUS



Land Information New Zealand
Iriti te Whenua



water NEW ZEALAND
The New Zealand Water & Weather Resource Authority



vector